

# Steam Room PV15-D

## Spare Parts List



# Steam Room PV15-D – Steam Section



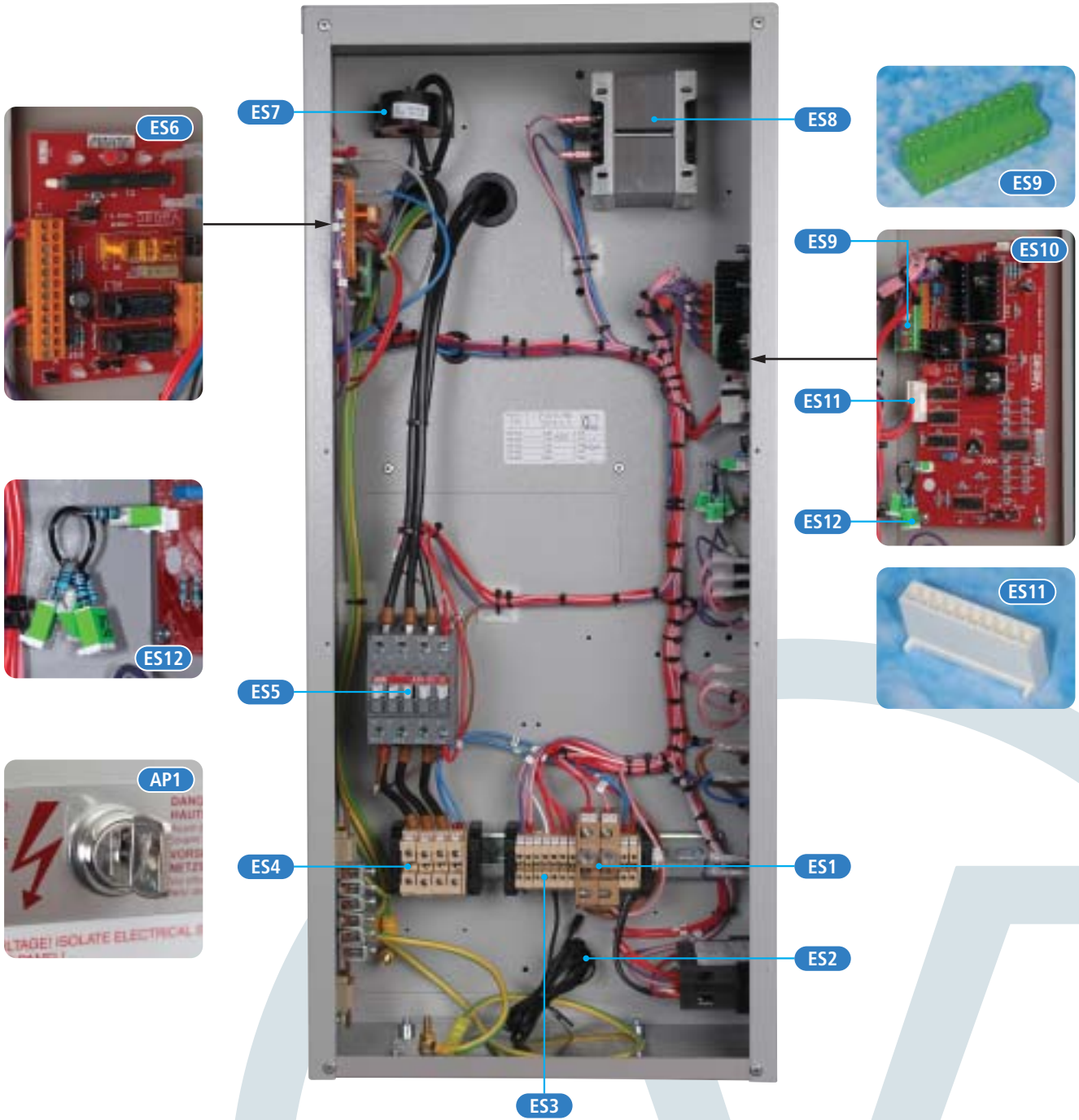
Base of unit viewed from below with pump cover removed.

## STEAM SECTION

REF	PART No.	DESCRIPTION
SS1	3910195	Feed/Drain Manifold
SS2	M520158	Neutral Discharge Connector
SS3	2560026	13mm Condensate Hose
SS4	2560030	22mm Condensate Hose
SS5	2560028	16mm Condensate Hose
SS6	3910168	Tundish Fill Cup
SS7	2560030	22mm Condensate Hose
SS8	3910037	'O' Ring
SS9	4060030	Wire Hose Clip (17-18mm)
SS10	2620320	Feed Valve
SS11	4060031	Wire Hose Clip (20mm Max)
SS11L	4060034	Wire Hose Clip (28mm Max)
SS12	2160120	Gasket Vapac Pump Housing
SS13	1210109	Temperature Controller AKO (From March 03)
	1210105	Temperature Controller LAE (Pre March 03)

REF	PART No.	DESCRIPTION
SS14	1190402	Rocker Switch
SS15	1110400	Lamp (Neon Red)
SS16	1190401	Rocker Switch (Moment)
SS17	1190061	Rocker Switch (3 Position)
SS18	M540012	Cable C/W Electrode Cap (1m Length)
SS19	2560053	35mm ID Vapac Hose
SS20	M570002	White Electrode Cap
SS21	M570003	Electrode Cap Power (Lug)
SS22	4060014	Hose Clip (Worm Drive) 35-45mm
SS23	PCM2N-SR	6 kW Standard Steam Cylinder (Replacement for PCM2N-2WA)
	PCD2HS-SR	6 kW High Conductivity SS Steam Cylinder (Replacement for PCD2HS-2WA)
	PCM3N-SR	12 kW Standard Steam Cylinder (Replacement for PCM3N-3WA)
	PCM3L-SR	12 kW Low Conductivity Steam Cylinder (Alternative to PCM3L-3WA)
	SS25	
	SS24	
	SS27	

# Steam Room PV15-D – Electrical Section



REF	PART No.	DESCRIPTION
	PCM3H-SR	12 kW High Conductivity Steam Cylinder (Replacement for PCM3H-3WA)
	PCC3H-SR	12 kW High Conductivity Cleanable Steam Cylinder (Replacement for PCC3H-3WA)
	PCM3HS-SR	12 kW High Conductivity SS Steam Cylinder (Replacement for PCM3HS-3WA)
	PCC3HS-SR	12 kW High Conductivity SS Cleanable Steam Cylinder (Replacement for PCC3HS-3WA)
SS24	2600070	New Pump (No Housing)
SS25	3910112	Pump Cover
SS26	M520250	Flexible Feed Hose
SS27	M990600	Drain Trap Assembly

REF	PART No.	DESCRIPTION
	1220105	Temperature Sensor LAE (Pre March 03)
ES3	1200032V	Control Terminal
ES4	1200513V	Mains Terminal
ES5	1060264	Contactor (ABB)
ES6	1150620-C	LSI/Drain PCB
ES7	1240149	Current Transformer
ES8	1240109	Mains Transformer
ES9	1200989	10 Way Molex
ES10	1150582	PCB Control
ES11	1150224	Connector Cable Shell (10 Way)
ES12	M570203	CSP Green Label (By Amps)

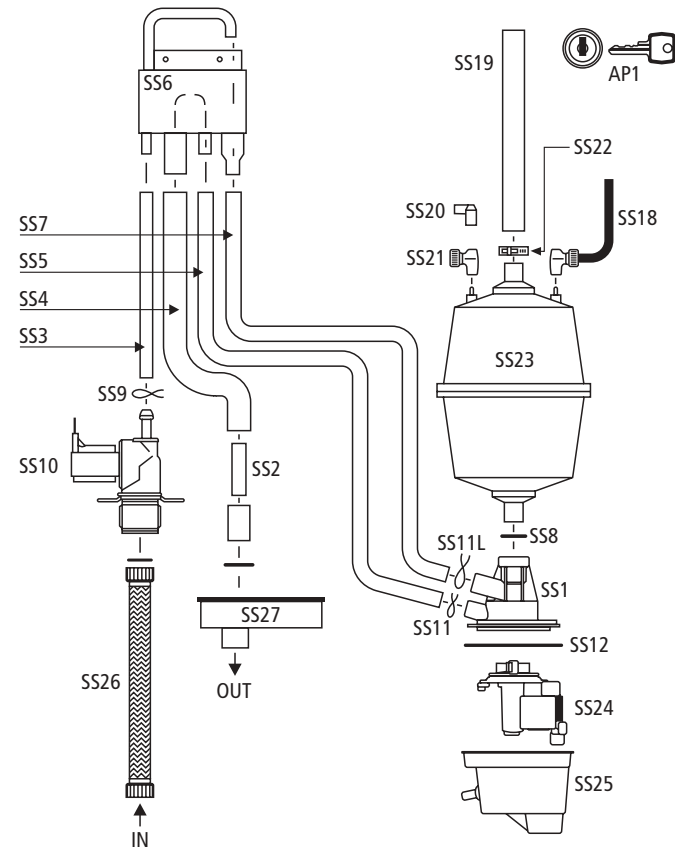
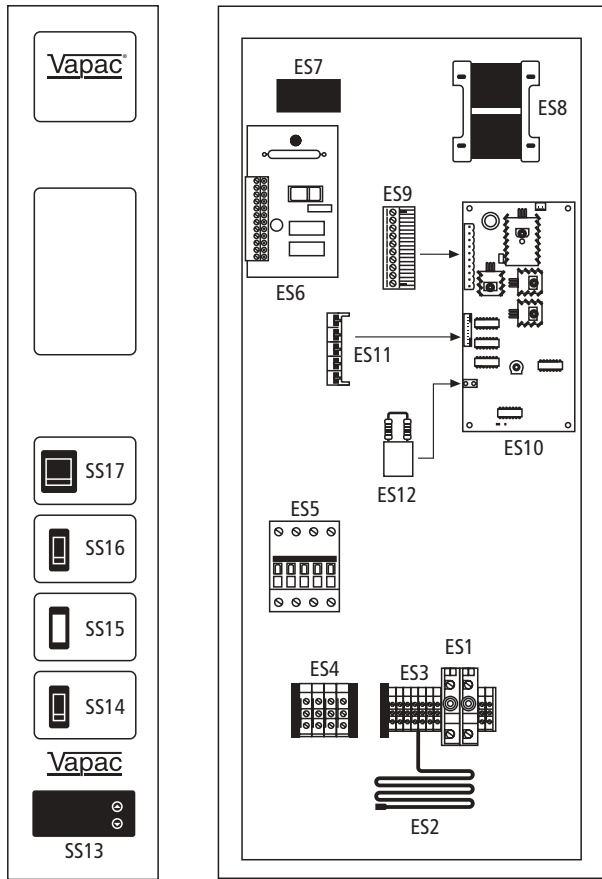
## ELECTRICAL SECTION

REF	PART No.	DESCRIPTION
ES1	1200060V	Fuse Terminal
ES2	1220109	Temperature Sensor AKO (From March 03)

## ACCESS PANEL

REF	PART No.	DESCRIPTION
AP1	1010254	Locks and Keys

# Steam Room PV15-D



## STEAM SECTION

REF	PART No.	DESCRIPTION
SS1	3910195	Feed/Drain Manifold
SS2	M520158	Neutral Discharge Connector
SS3	2560026	13mm Condensate Hose
SS4	2560030	22mm Condensate Hose
SS5	2560028	16mm Condensate Hose
SS6	3910168	Tundish Fill Cup
SS7	2560030	22mm Condensate Hose
SS8	3910037	'O' Ring
SS9	4060030	Wire Hose Clip (17-18mm)
SS10	2620320	Feed Valve
SS11	4060031	Wire Hose Clip (20mm Max)
SS11L	4060034	Wire Hose Clip (28mm Max)
SS12	2160120	Gasket Vapac Pump Housing
SS13	1210109	Temperature Controller AKO (From March 03)
	1210105	Temperature Controller LAE (Pre March 03)
SS14	1190402	Rocker Switch
SS15	1110400	Lamp (Neon Red)
SS16	1190401	Rocker Switch (Moment)
SS17	1190061	Rocker Switch (3 Position)
SS18	M540012	Cable C/W Electrode Cap (1m Length)
SS19	2560053	35mm ID Vapac Hose
SS20	M570002	White Electrode Cap
SS21	M570003	Electrode Cap Power (Lug)
SS22	4060014	Hose Clip (Worm Drive) 35-45mm
SS23	PCM2N-SR	6 kW Standard Steam Cylinder (Replacement for PCM2N-2WA)
	PCD2HS-SR	6 kW High Conductivity SS Steam Cylinder (Replacement for PCD2HS-2WA)
	PCM3N-SR	12 kW Standard Steam Cylinder (Replacement for PCM3N-3WA)
	PCM3L-SR	12 kW Low Conductivity Steam Cylinder (Alternative to PCM3L-3WA)
	PCM3H-SR	12 kW High Conductivity Steam Cylinder (Replacement for PCM3H-3WA)
	PCC3H-SR	12 kW High Conductivity Cleanable Steam Cylinder (Replacement for PCC3H-3WA)
	PCM3HS-SR	12 kW High Conductivity SS Steam Cylinder (Replacement for PCM3HS-3WA)
	PCC3HS-SR	12 kW High Conductivity SS Cleanable Steam Cylinder (Replacement for PCC3HS-3WA)
SS24	2600070	New Pump (No Housing)
SS25	3910112	Pump Cover
SS26	M520250	Flexible Feed Hose
SS27	M990600	Drain Trap Assembly

## ELECTRICIAL SECTION

REF	PART No.	DESCRIPTION
ES1	1200060V	Fuse Terminal
ES2	1220109	Temperature Sensor AKO (From March 03)
	1220105	Temperature Sensor LAE (Pre March 03)
ES3	1200032V	Control Terminal
ES4	1200513V	Mains Terminal
ES5	1060264	Contact (ABB)
ES6	1150620-C	LSI/Drain PCB
ES7	1240149	Current Transformer
ES8	1240109	Mains Transformer
ES9	1200989	10 Way Molex
ES10	1150582	PCB Control
ES11	1150224	Connector Cable Shell (10 Way)
ES12	M570203	CSP Green Label (By Amps)

## ACCESS PANEL

REF	PART No.	DESCRIPTION
AP1	1010254	Locks and Keys

The Vapac logo is an internationally registered trademark and its equipment is covered by international patents.

We reserve the right to change the design or specification of the equipment without prior notice.

# Vapac®

Vapac Humidity Control Limited

Fircroft Way Tel: +44 (0)1732 863447  
Edenbridge Fax: +44 (0)1732 865658  
Kent TN8 6EZ www.eaton-williams.com

An Eaton-Williams Company