

QUALITAIR

QLC BMS START KIT 0412139

1. SAFETY PROCEDURES

Installation

The units making up the Air Conditioning System must be installed only by a qualified engineer, following the mandatory and local codes of practice.

Handling

Care must be taken when the units are moved or lifted to ensure that everyone and everything is safe. When lifting equipment is used, it must be suitable and approved.

Application

Ensure that the unit is only used for suitable purpose / applications.

Electrical Connection

Electrical work and connections must only be made by authorised electricians in accordance with mandatory regulations and local codes of practice.

Warranty

Failure to comply with the manufacturer's installation instructions could affect the performance of the unit and invalidate the warranty. Warranty is also subject to the implementation of a planned service / maintenance agreement as documented in the warranty booklet supplied with the unit.

General

- a) All works must be carried out in accordance with manufacturer's installation and operating procedures.
- b) Good working practices must be followed at all times so that Mechanical and Electrical Hazards are kept to a minimum.
- c) The equipment has been fitted with doors and covers to prevent access during operation. These must be kept in place and additional guards fitted, if necessary.

- d) The equipment must be connected to an external electrical isolator as one is not supplied fitted to the unit.
- e) Servicing and maintenance must only be carried out by fully qualified and competent staff. Before any work is started, electrically isolate the units to make sure they cannot be switched on accidentally and allow sufficient time for isolated parts to come to rest before removing panels. Electrical isolation switches MUST be labelled to show that they are off during servicing and maintenance operation.

NOTE
**SOME UNITS ARE DORMANT IN
STANDBY MODE AND CAN RESTART
WITHOUT WARNING IF THEY ARE NOT
ELECTRICALLY ISOLATED.**

- f) Care must be taken not to touch components or pipework which may be extremely hot or cold, for a period after the unit is electrically isolated.
- g) After completing any tasks ensure all guards, covers and doors are correctly refitted before restoring the power supply to the unit.
- h) Air conditioning equipment may generate unacceptable noise levels. If noise levels are unacceptable sound and vibration attenuators may be required. For noise level guidance refer to technical literature, or contact Qualitair, or their distributors for advice.

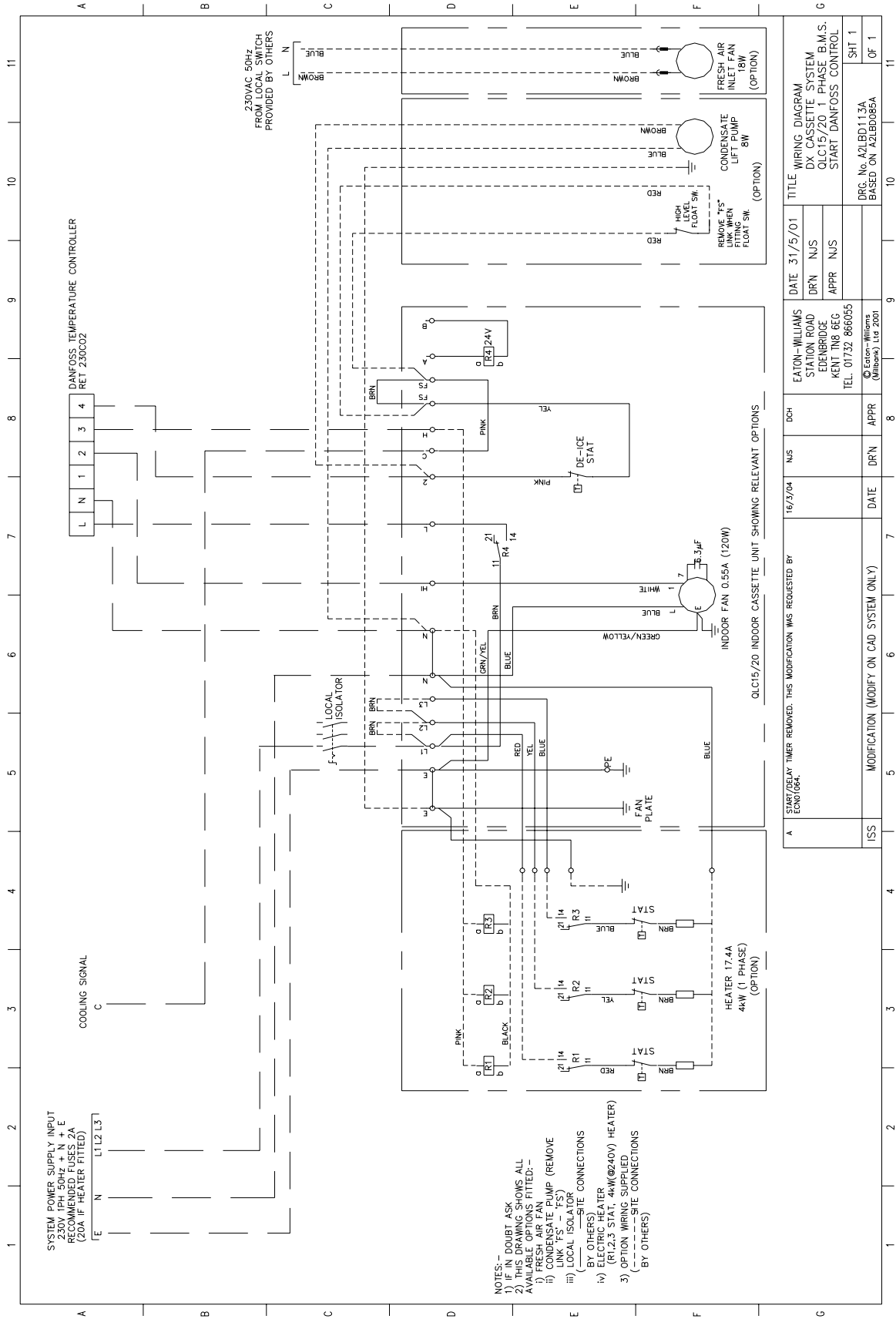
SPECIAL NOTE
**If anything is not clear, please contact
your distributor for clarification.**

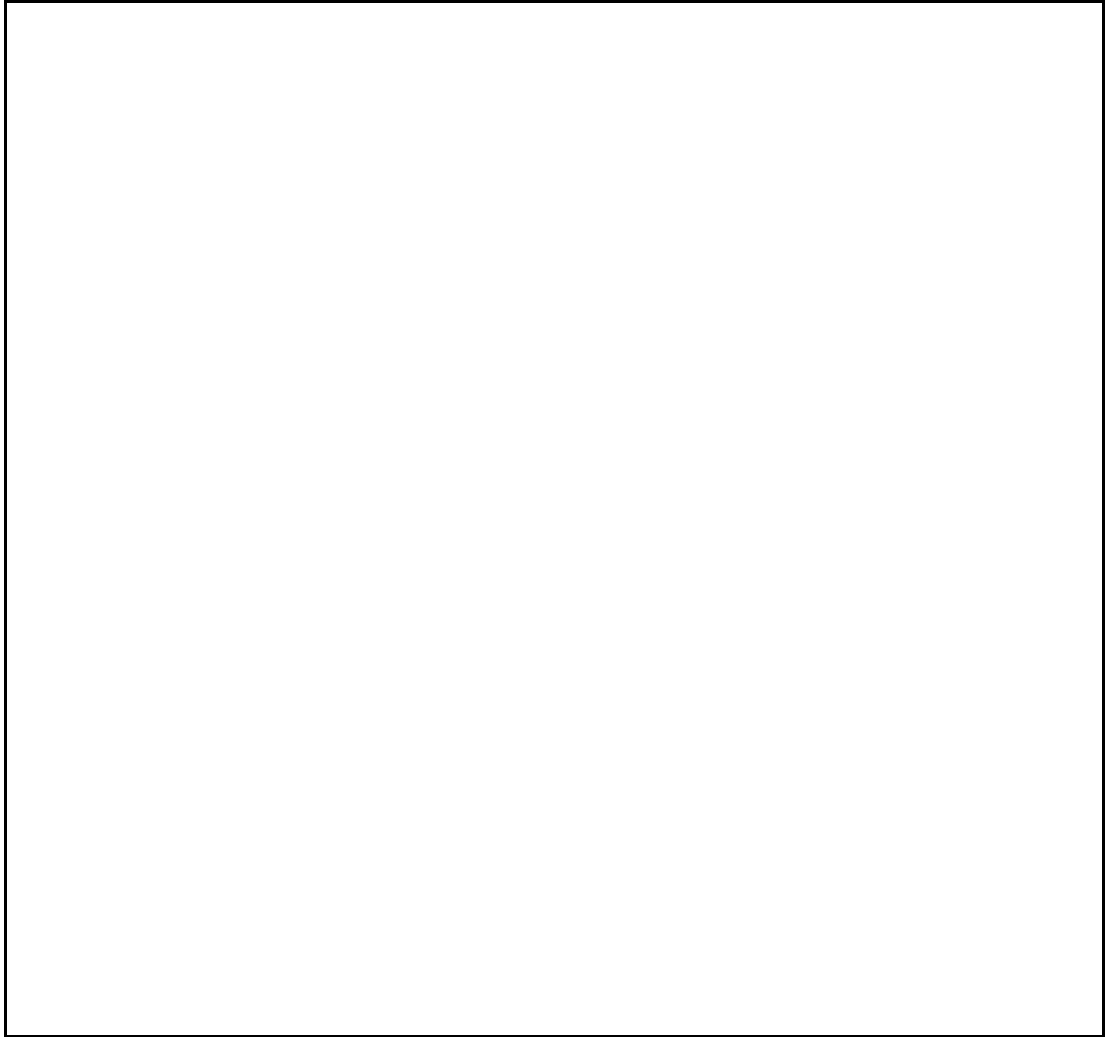
This kit is to enable the QLC unit to be started by a BMS system.

The kit comprises of a 24v n/o relay, terminal block and cables.

Fitting

- First remove and discard the link between terminal 11 and terminal 1 on the main terminal block.
- Then remove and discard the terminal block on the unit and replace with the 16-way block from the kit.
- Adhere marker strip to plate adjacent to block.
- Replace all the other cables onto the block in the same places as on the old block.
- Fit the relay from the kit to the terminal plate using the two N°6 self-tapping screws in the holes in the plate.
- Fit the new wires as follows:
 - Brown wire from terminal L1 to relay terminal 11
 - Brown wire from terminal L to relay terminal 14
 - Black wire from relay terminal A to terminal block A
 - Black wire from relay terminal B to terminal block B





QUALITAIR

**STATION ROAD
EDENBRIDGE
KENT
TN8 6EG
TEL: (01732) 866066
FAX:(01732) 867937**

AN EATON-WILLIAMS GROUP COMPANY

As part of the policy of continuous product improvement, we reserve the right to alter specifications without notice